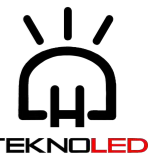


# Pde

Professional Roadway Lighting

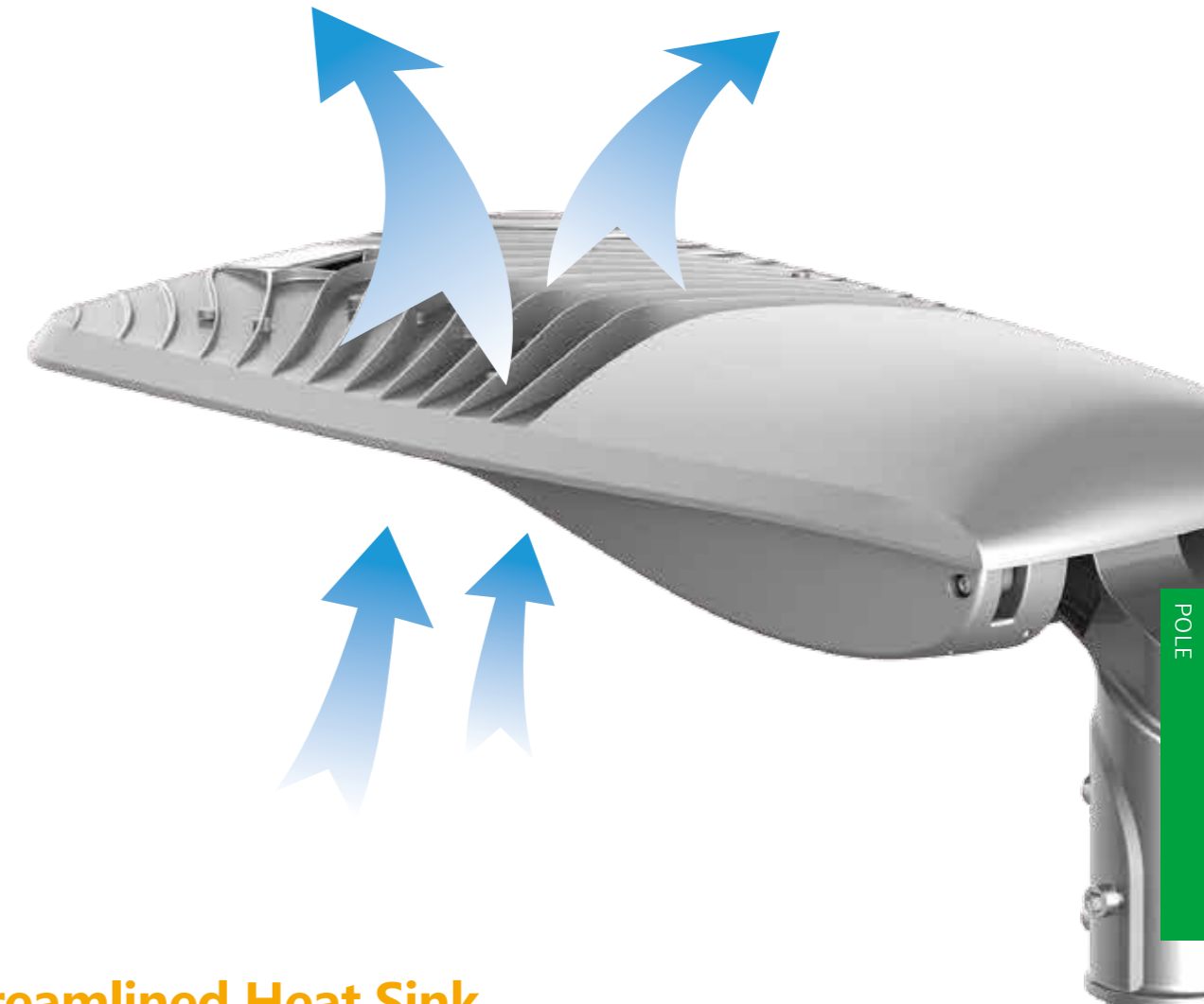


130  
LM/W



## Pole

- Accept ANSI standard dimmable photocells to provide a connection between the photocell and the luminaire
- Available with two or four dimming contacts to support one or two channel dimming protocols
- Various NEMA socket available: 3pin, 5pin, 7pin



## Streamlined Heat Sink

Arc-shaped cooling fins accelerate airflow, enhancing the heat dissipation performance. This allows the temperature of LEDs negative electrode to be within 50°C.

## Different Power, Two Sizes

Power ranges from 30W to 180W with two sizes. One family, boundless configurations. Offered in two sizes, Viper optimizes performance, output, and efficiency. The Viper is ideal for applications ranging from pedestrian walkways to large logistical centers with extremely high mounting heights. Outputs begin at 5,000 lm. Maximum output exceeds 42,000 lm.



## Dimensions

### 30W , 50W , 70W , 90W , 120W , 150W , 180W

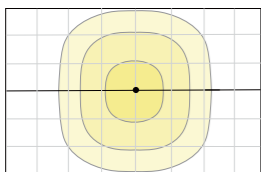
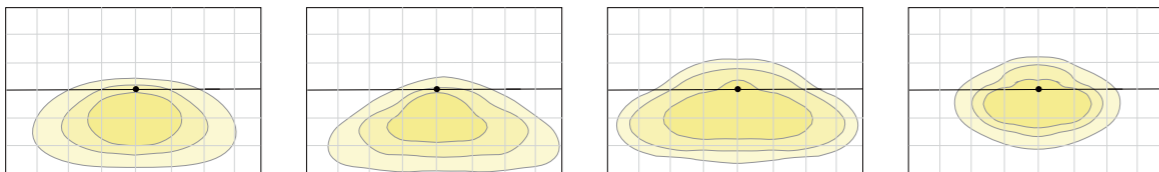
Net Weight	8.5±0.3kg (18.74±0.66Lbs)
Outlook Dimensions	763x352x167mm (30.04"×13.86"×6.57")
Export Carton Size	790x390x150mm (31.1"×15.35"×5.91")

### 30W 50W 70W 90W

Net Weight	6.5±0.3kg (14.33±0.66Lbs)
Outlook Dimensions	680x282x160mm (26.77"×11.1"×6.3")
Export Carton Size	700x350x145mm (27.56"×13.78"×5.71")

## Light Distribution Optional

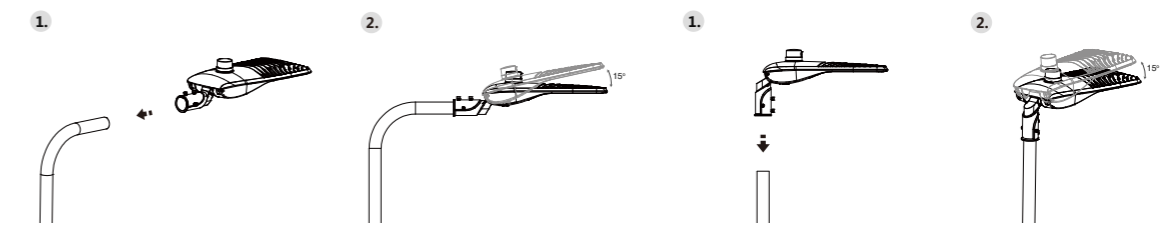
Multiple optical lens Type I, II, III, V Light utilization rate ≥80%



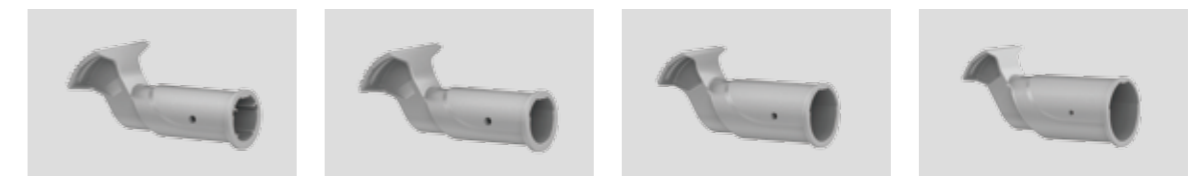
## Product Parameters

Part Number	POLE-030	POLE-050	POLE-070	POLE-090	POLE-120	POLE-150	POLE-180
Lumen Output	3,900lm	6,500lm	9,100lm	11,700lm	15,600lm	18,750lm	21,600lm
Wattage	30W	50W	70W	90W	120W	150W	180W
Luminous Efficacy	130lm/W						
CCT	4000K(3000K, 5000K optional)						
CRI	> Ra70(>Ra80 optional)						
IP Rating	IP66						
Working Temperature	-30°C to +50°C						
LED Driver	Meanwell or Inventronics, Sosen						
Input Voltage	100-240Vac/100-277Vac 50-60Hz, ≥0.93						
Warranty	5 years						
Lifespan	> 50,000hrs						
HID Equivalent	70W	150W	150W	250W	250W	400W	400W

## Mounting Options



## Four Sizes Spigot



diameter: 34mm/1.34"

diameter: 42mm/1.65"

diameter: 60mm/2.36"

diameter: 76mm/2.99"

## Certificates

