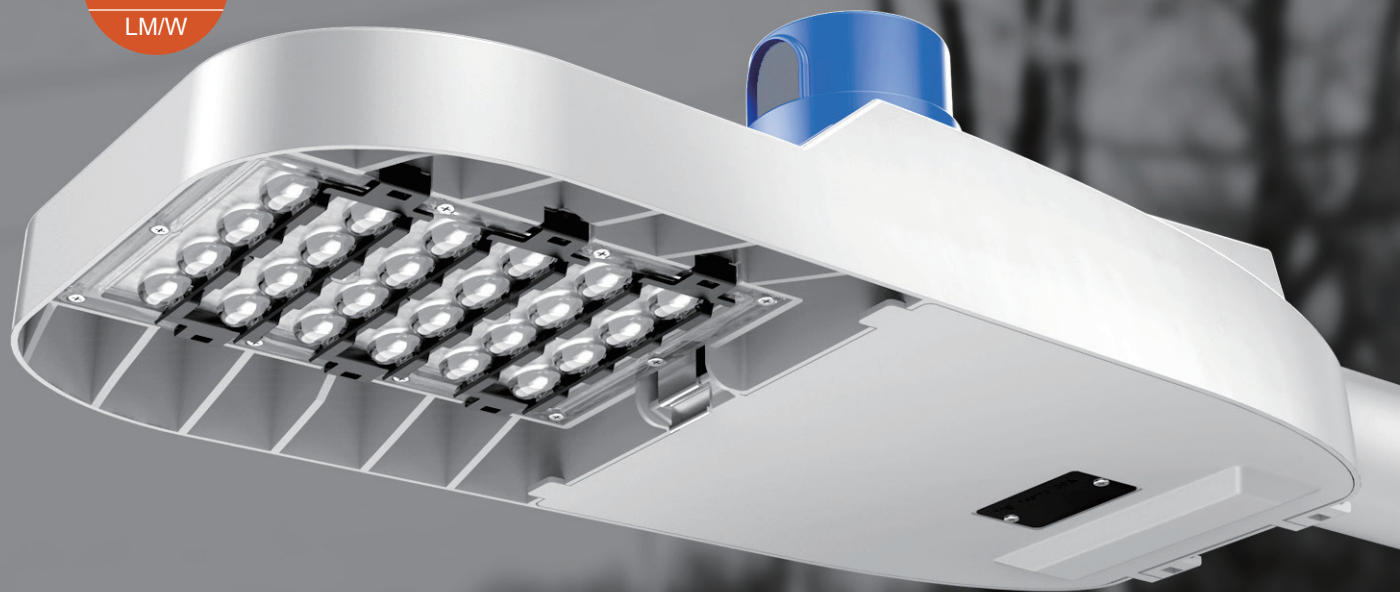


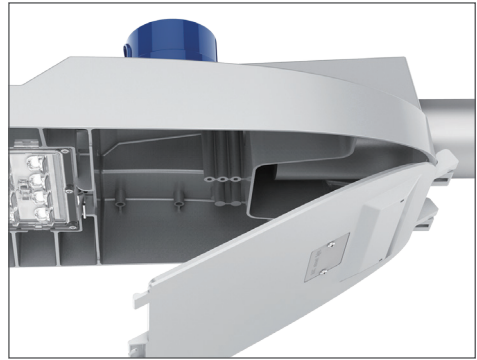
# TRAIL

Rural Road Lighting

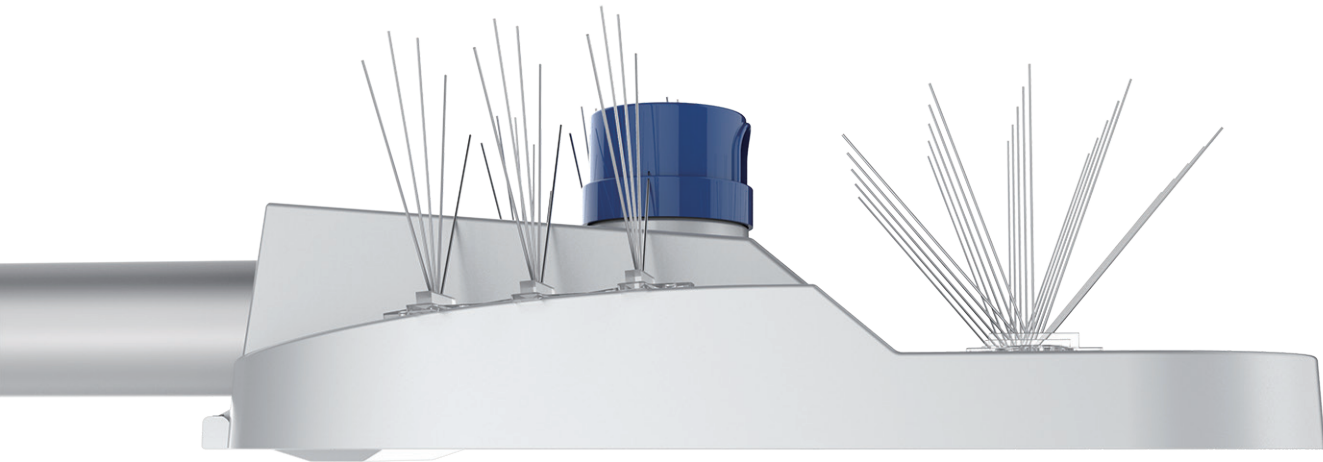
Wattage: 30W, 40W, 60W

140  
LM/W





The cavity of driver is designed into ingenious structure for quick assembly and disassembly, which is very convenient to later maintenance and driver replacement.



Backlight control

## Photometric Diagrams



# WET

locations

PHOTOCELL  
TIMER CONTROL  
SOLAR OPTIONAL